



PCM

**£3,200 PCM**

**Mile End Road**

London, E1 3AR

Offered for rent is this 4 double bedroom split level apartment located on Mile End Road.

The property is set on the ground and 1st floor and features a modern kitchen, open plan reception room with access to rear yard, 4 double bedrooms and a modern fitted bathroom.

Both Whitechapel and Stepney Green Stations are a short walk with Brick Lane and the City being a short commute.

Offered furnished, available from the September.

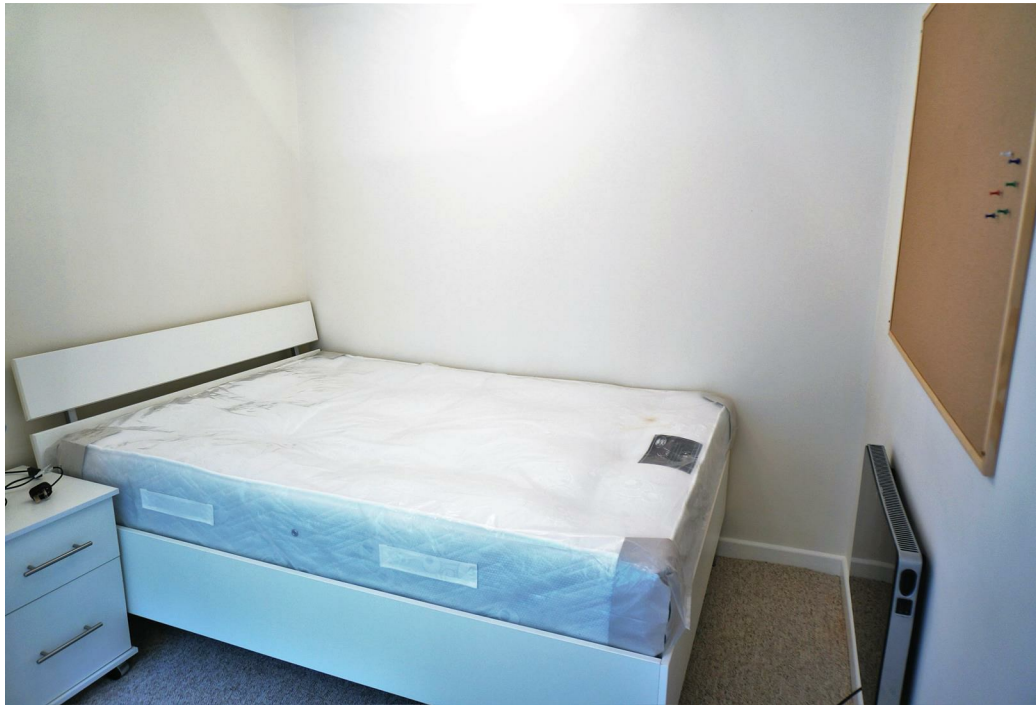
12 month contract

Council tax: Band B

5 weeks deposit: £3692

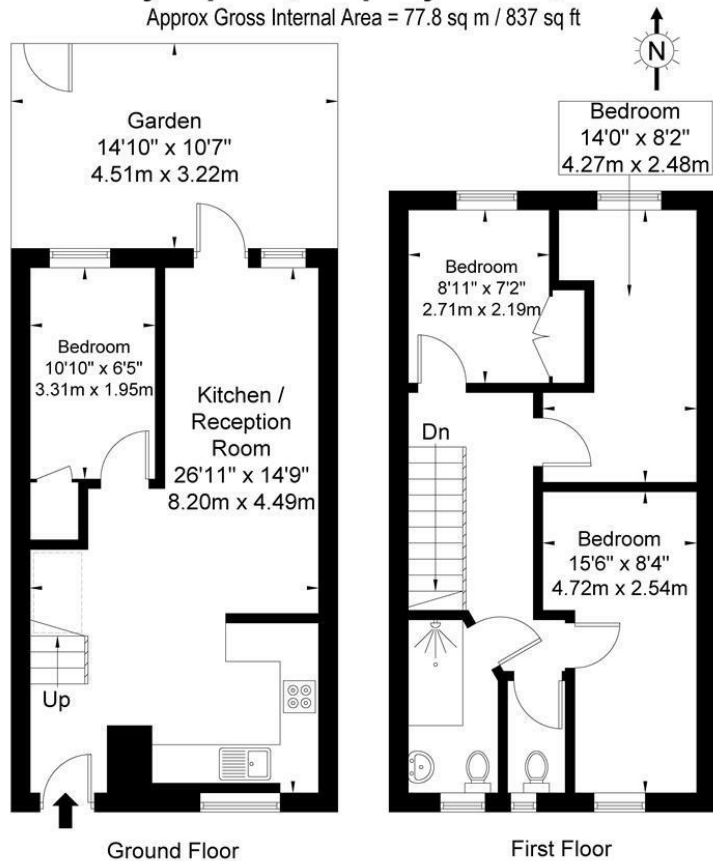




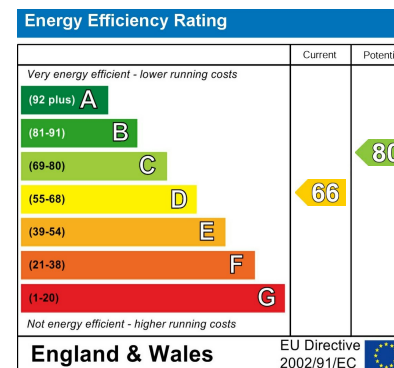


# O'Leary Square, Stepney Green, E1 3AR

Approx Gross Internal Area = 77.8 sq m / 837 sq ft



The Floor plan is not to scale and measurements and areas shown are approximate and therefore should be used for illustrative purposes only. The plan has been prepared in accordance with the RICS code of Measuring Practice and whilst we have confidence in the information produced it must not be relied on. If there is any aspect of particular importance, you should carry out or commission your own inspection of the property.  
Copyright © BLEUPLAN



Agents Note: Whilst every care has been taken to prepare these particulars, they are for guidance purposes only. All measurements are approximate and are for general guidance purposes only and whilst every care has been taken to ensure their accuracy, they should not be relied upon and potential buyers/tenants are advised to recheck the measurements

**OFFICE ADDRESS**  
88 Cheshire Street  
London  
E2 6EH

**OFFICE DETAILS**  
0207 739 6969  
info@peachproperties.com  
www.peachproperties.com